

# WP5

## 2015 PROGRESS & 2016 ACTIVITY PLANS

Flemming Gertz

SDU 31. Marts 2016

NOVAGRASS Workshop

# 2014 PROGRESS

## WP 5. Development and application of large-scale restoration techniques

- *Milestone 5.1 Commercial eelgrass harvesting*
- *Milestone 5.2 Eelgrass seed storage for commercial use*
- *Milestone 5.3 Seed and/or seedling broadcasting techniques for commercial use*
- *Milestone 5.4 Developed techniques are applied full-scale at field locations where stressors are prevented*
- *Milestone 5.5 Monitoring of eelgrass*
- *Milestone 5.6 Technical guidelines/user manuals*

Planning & data analysis		
Development		
Field and lab activities		
Dissemination of results		

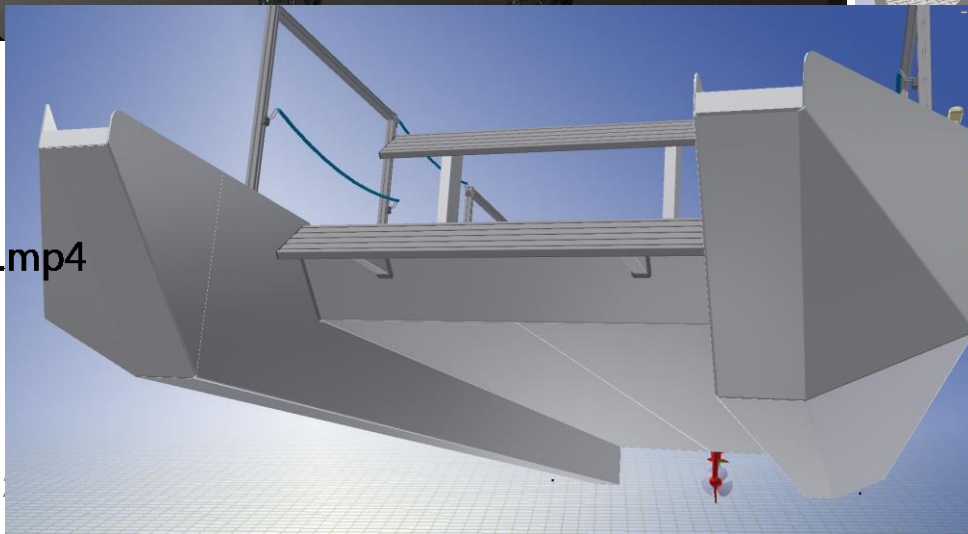
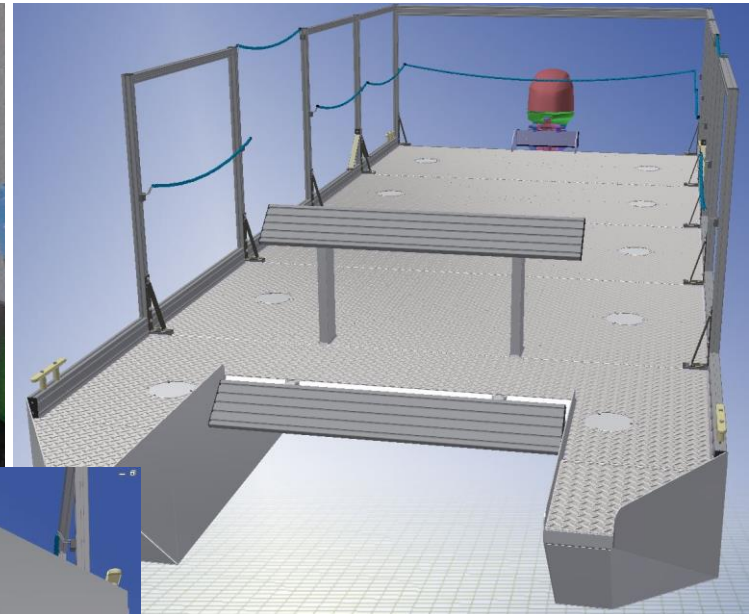
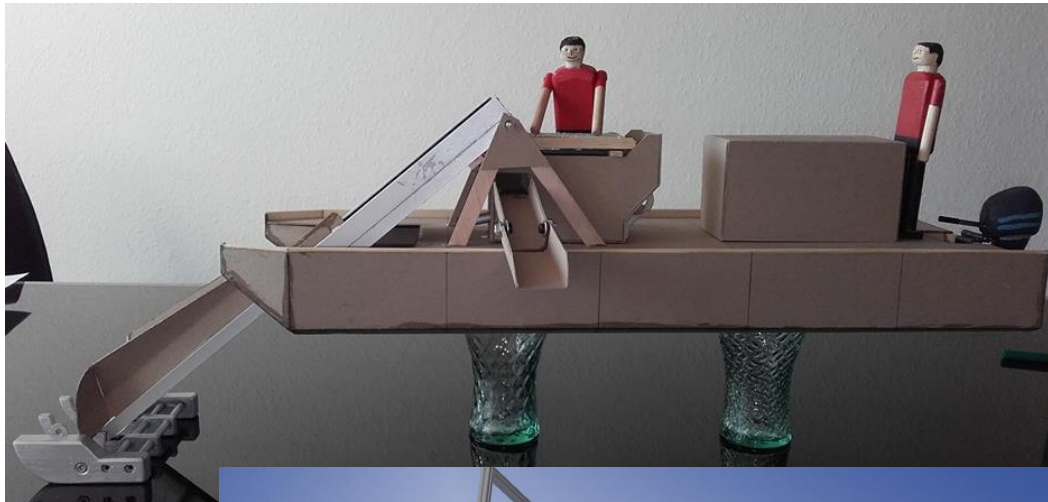
Year	2013				2014				2015				2016				2017			
Quarter	1	2	3	4	1	2	3	4	1	2	3	4	1	2	3	4	1	2	3	4
WP5 – Large-scale																				
Milestone 5.1																				
Milestone 5.2																				
Milestone 5.3																				
Milestone 5.4																				
Milestone 5.5																				
Milestone 5.6																				

## 5.1 LARGE SCALE COMMERCIAL EELGRASS HARVESTER

- Collaboration with VIA University College and Mercantec (Technical and commercial educations / MetalCraft)
- VIA University College:
  - Design and drawings
- Mercantec
  - Building (together with professionals)

# 5.1 LARGE SCALE COMMERCIAL EELGRASS HARVESTER

- 6,8 m long and 2,5 m wide. (transport on land by trailer)



P\_20160302\_006.mp4

# HARVEST 2015

## Manuel with scythe

- 15 l of seeds. (10 l good quality)
- 18 man days work (excl preparation)
- 2 days man work for cleaning seeds (small seperator)
- Sites: Limfjorden, Kattegat, Øresund (too late for Dalby Bugt)
- All sites possible too find high density of shoots.....when looking



# HARVEST 2015



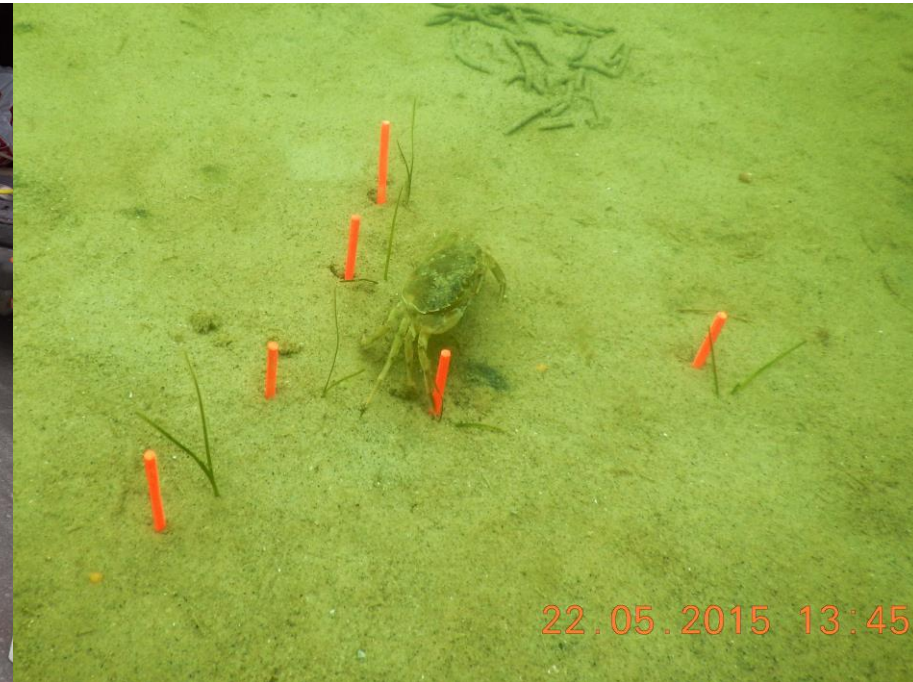


## STONE 5.2 STORAGE AND SEPARATION

**Task done**  
**But still room for improvements**



# MLESTONE 5.3 SEED AND/OR SEEDLING BROADCASTING TECHNIQUES



Sowing: Bregør marts 2015, Haverslev oktober 2015



# TESTING "POWER" OF PLANTS

An underwater photograph showing several clumps of seagrass, likely eelgrass, growing in rows on a sandy seabed. The water is slightly turbid, giving the scene a yellowish-green tint. The plants are dark green and have long, thin leaves.

Rows with plants from:

Limfjorden

Haverslev

Dalby Bygt

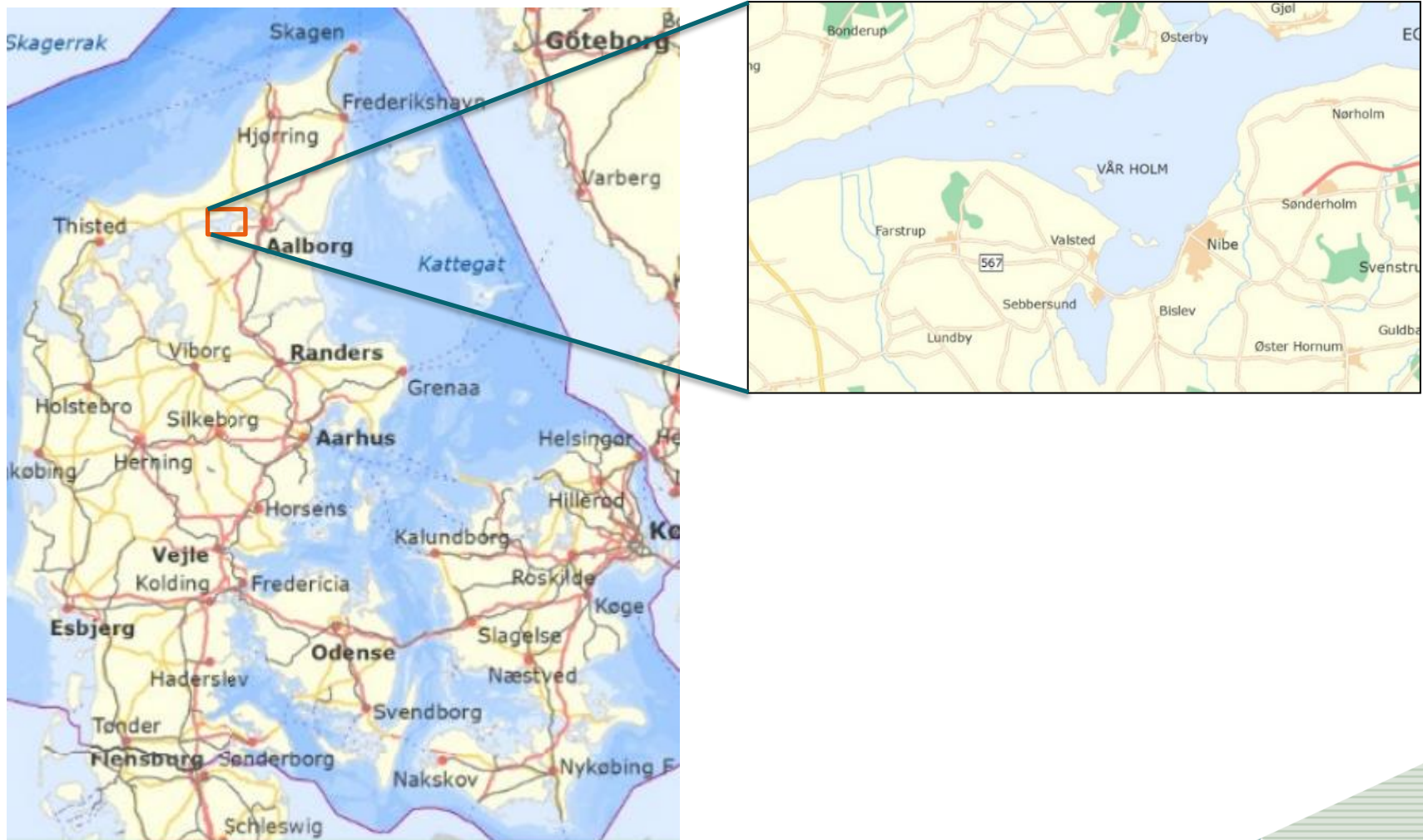
Bregnør

Øresund

## 2016 ACTIVITY PLANS

- Budget – 150.000 DSF kr moved from SEGES to Multidyk and Grøn&BlåTech (UrbanGreen). Gives possibility for 2016 activity
- 5.1: finish large scale harvester 2016
- 5.2: Optimizing storage for 2016 seeds
- 5.3: Optimizing sowing machine. Sowing marts 2016 and sep/oct
- 5.4 not
- 5.5 Monitoring ongoing (incl temp/salinity)

# LIMFJORDEN AT NIBE-GJØL





# LIMFJORDEN AT NIBE-GJØL



# LIMFJORDEN AT NIBE-GJØL





# LIMFJORDEN AT NIBE-GJØL





# LIMFJORDEN AT NIBE-GJØL



# LIMFJORDEN AT NIBE-GJØL



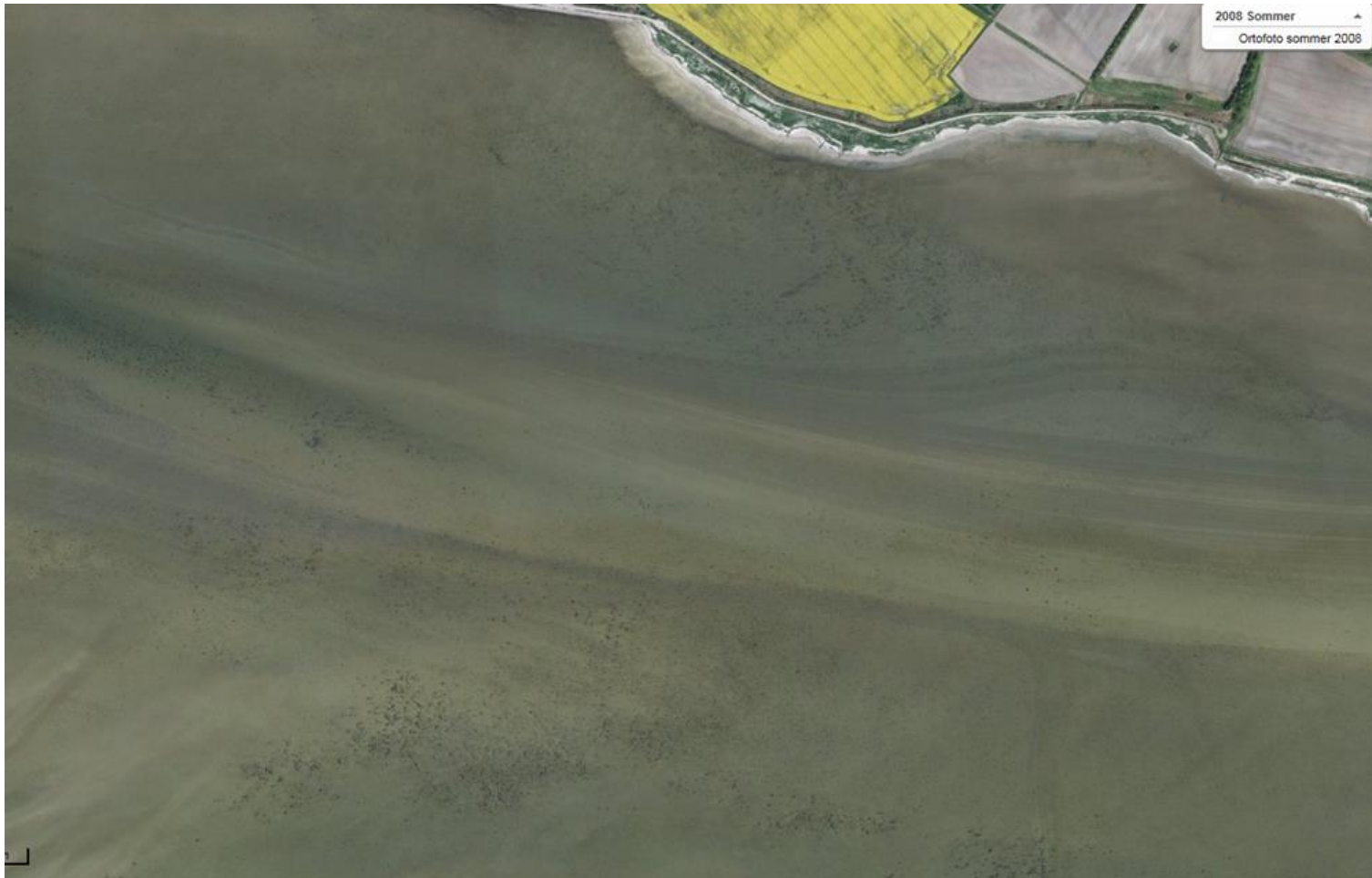


# LIMFJORDEN AT NIBE-GJØL





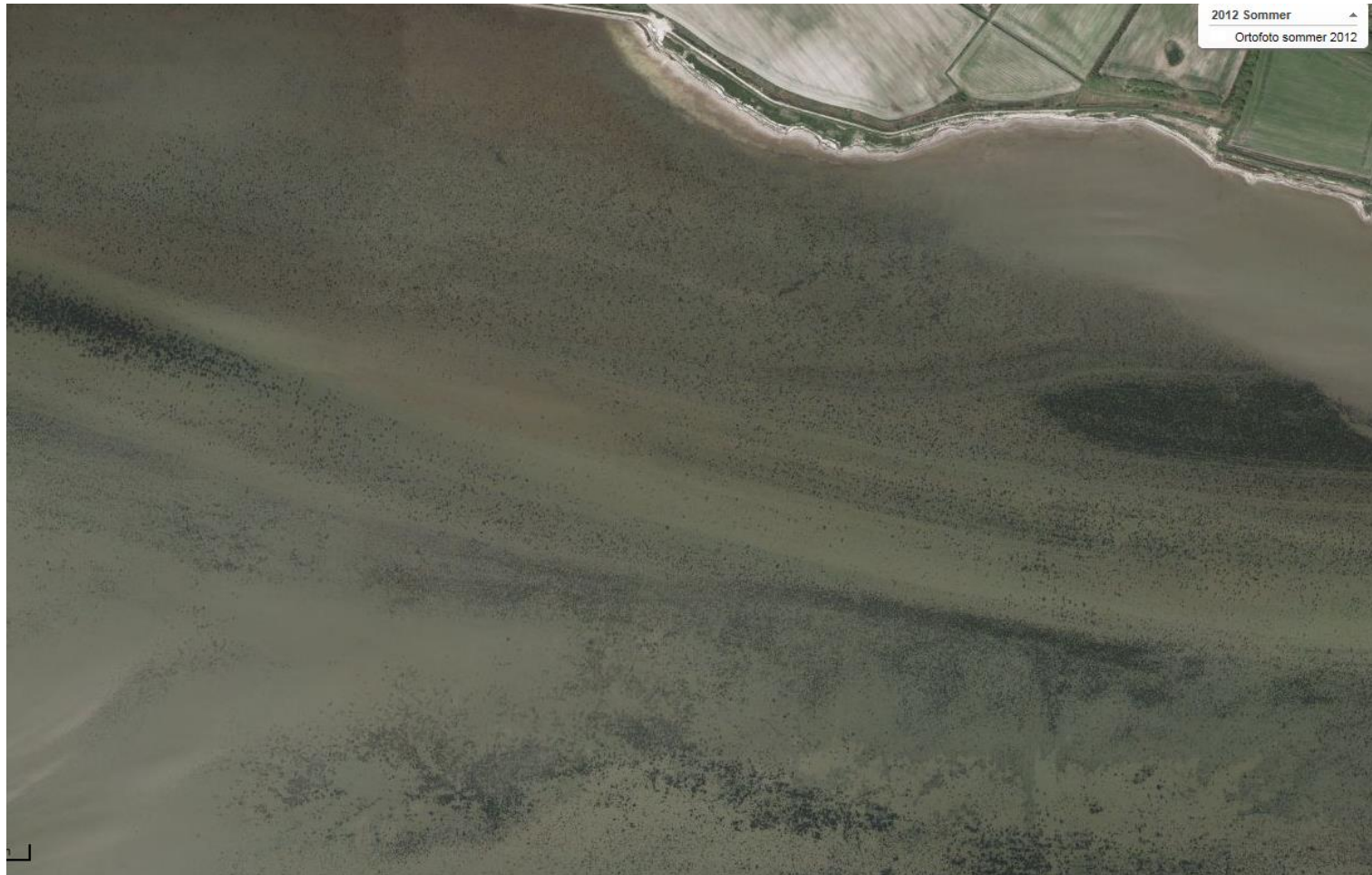
# LIMFJORDEN AT NIBE-GJØL



# LIMFJORDEN AT NIBE-GJØL



# LIMFJORDEN AT NIBE-GJØL

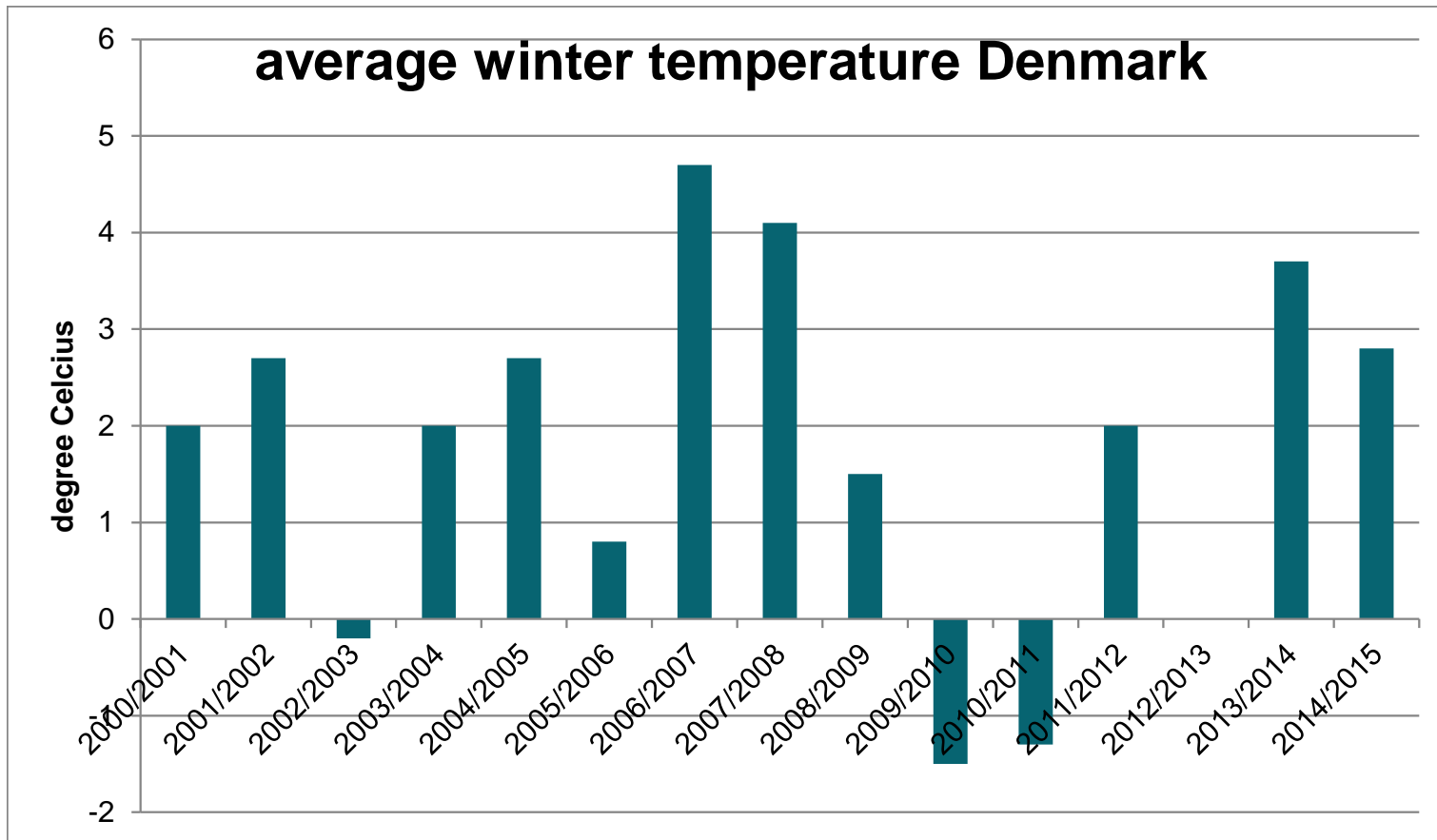




# LIMFJORDEN AT NIBE-GJØL



# LIMFJORDEN AT NIBE-GJØL



# LIMFJORDEN AT NIBE-GJØL





# LIMFJORDEN AT NIBE-GJØL



# LIMFJORDEN AT NIBE-GJØL



## LIMFJORDEN AT NIBE-GJØL





# LIMFJORDEN AT NIBE-GJØL

